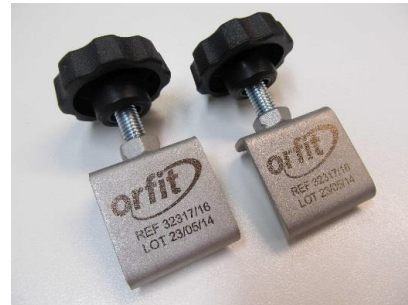


# RAYCAST® HIGH PRECISION BASE PLATE-TO-COUCH TOP FIXATION DEVICES

## ANTI-TILT FIXATION DEVICE FOR THE SHORT SBRT BASE PLATE



Article No. : **32317/16**

### A. GENERAL PRODUCT INFORMATION

The product referred to in these instructions is a fixation device, used to connect a short SBRT base plate to an Elekta iBEAM® couch. It provides a safe solution when the base plate is placed in overhang.

### B. PRODUCT RANGE

This product can only be used with the short SBRT base plate ref. 32317/14.

### C. PRECAUTIONS FOR USE

The device is made from metal and may damage the couch or base plate so be careful with handling. This device is not MRI compatible.



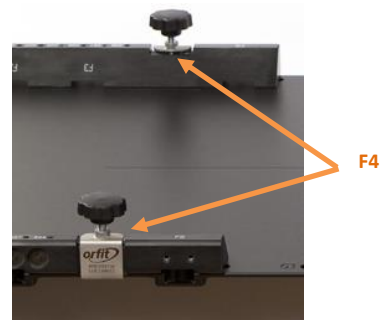
### D. FIXATION TO THE BASE PLATE

This device is used in combination with fixation device ref. 32126 for longitudinal and lateral indexing. More information how to use this fixation device with the short SBRT base plate (ref. 32317/14) can be found on our website <http://www.orfit.com/en/fixation-devices/>

1. Turn the screw until the bottom side is about flush with the inside of the clamp. This insures that there is enough opening to fit over the edge of the base plate.



2. Lay the base plate on the couch, then mount the clamps, with the screw facing vertically upwards, over the edge of the base plate on location marked 'F4'.



3. Rotate the screws clockwise to clamp the base plate onto the couch edge. Make sure the screw is located into the foreseen hole in the base plate. There is no need for a high clamping force so fix manually with light strength. Overdoing the clamping force may damage the couch!



### E. REMOVAL

The clamps need to be unscrewed and removed away from the base plate completely before attempting to remove the base plate off the couch.

### F. PROPERTIES

#### F.1. Physical Properties

Dimensions : L 35 mm x W 40 mm x H 65 mm

Weight : 0,120 kg (set of 2 pieces)

Metal parts – Not MRI compatible

#### F.2. Mechanical Properties

Max. load : 30 kg vertically divided over the 2 clamps with the base plate on max. overhang. This limit is determined by the max. load that may be placed on the cranial end of a short SBRT base plate in max. overhang (see respective instruction for use for product ref. 32317/14).

#### G. STORAGE

Always store the product in a safe place to prevent it from getting damaged.

#### H. MAINTENANCE AND WASTE MANAGEMENT

This product can be cleaned and disinfected by means of soapy water or an isopropanol based disinfectant, applied with a soft cloth. If unsure about the cleaning fluid, do not use. **Never use aerosol sprays, corrosive cleaning agents, solvents or abrasive detergents.**

Periodic checks of the product should be done to insure the parts are not worn and require repair or replacement. **Do not attempt to make repairs yourself.** Contact your distributor if there are any questions or concerns.

The product can be disposed of with household waste.

#### I. FIXATION DEVICES COMBINATION PACKAGES

This product is part of following fixation devices combination packages:

- 33131

#### J. ADDITIONAL INFORMATION

For additional information such as distributor contact information, product brochures, Safety Data Sheets and regulatory information, please visit our website [www.orfit.com](http://www.orfit.com).

#### Note:

It is prohibited to make alterations to this text without prior approval from Orfit Industries.  
RAYCAST® is a registered trademark of ORFIT INDUSTRIES N.V. iBEAM® is a registered trademark of Elekta.



**ORFIT INDUSTRIES**  
Vosveld 9A | B-2110 Wijnegem | Belgium  
T (+32) (0)3 326 20 26  
[welcome@orfit.com](mailto:welcome@orfit.com)

[www.orfit.com](http://www.orfit.com)



Ref. No. 50086  
VERSION 2  
LAST UPDATE: 02/04/2021  
REVISION DATE: 02/04/2023